



Onde. Line

From flowers to houses.
Cracked planters motivated Joseph Monier to
drown iron reinforcements into concrete.
From this *Fo.Lies* started an *Arc.Hive* of pipes,
bridges and floors in reinforced concrete.

Onde.Line is a platform founded by four young
architects.

Through the website ondeline.com they share
ideas and projects on architecture and space,
using two main tools:

Fo.Lies and Arc.Hive.

While Fo.lies are ephemeral expressions,
inspirations, aspirations, bits, jokes, accidents,
nonsense, random, polemics, instincts,
impulses, intuitions, distractions,
Arc.hive is fully developed thought.

Since 2016 we collectively digest architectural
research, professional experience and media
culture in a sequence of publications, designs
and studies.

Onde.Line is currently navigating between Italy
and Switzerland to catch inspirations and foster
new visions through our diverse backgrounds
and experiences.



use@ondeline.com
www.ondeline.com

14/09/2020

Fan. Zine

A fanzine (blend of fan and
magazine or -zine) is a
non-professional and
non-official publication
produced by enthusiasts
of a particular cultural
phenomenon
for the pleasure of others
who share their interest.

_ WIKIPEDIA

Strategy

1. Big Plan
2. The Art of Thinking

Survival

1. An adventure that you must protect yourself from harm object's
2. Keep yourself alive

Onde.Line Fan.zine is about:

- Spaces and places - Tabula rasa
- Circumstances - Donald J. Trump
- Necessities - Gravity
- Potentials - Big Bang
- Stimulus - Floatsam/Debris
- **Strategies - Survival**
- Exchanges - D _ _ _ _ _ s
- Perspectives - Q _ _ _ _ _ o

Strategies SURVIVAL

Architecture is a consequence of Strategies. The abundance of skyscrapers – skyscrapers – triggers subsequent stock market returns as it indicates over-confidence. As stock market rise, prices follow and crashes are bound to happen, fueling slums and informal settlements with low-skilled workers and migrants.

Israeli colonies are a survival strategy towards its neighbours in the Middle East. Efficient settlements organized and secured like military compounds keep hostile Countries further from the mainland while claiming new one.

The Fujian tulou rural dwellings in China are a circular hut typology built between the 12th and the 20th century. The few external openings and the circular courtyard guaranteed a strong defense against intruders and a constant water supply.

Instinctively and explicitly the primitive hut is identified as the foundation for discussions around modern architecture. “Every beauty resides only in the most essential parts” M.A. Laugier, 1755. Today, the most direct connection can be found in bidonvilles and slums, urban conglomerate built by migrants around the biggest cities looking for hope and means to survive.

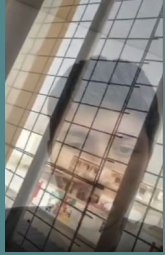
“I’m a survivor, I’m not gon’ give up
I’m not gon’ stop, I’m gon’ work harder
I’m a survivor, I’m gonna make it
I will survive, keep on survivin’ ”.





period
place
typology

2015
Khayelitsha, SA
House



Uyghur's Quarantine

"Merdan Ghappar is a Uyghur who has been in Chinese custody in the Xinjiang region since January. Video shot by Mr. Ghappar on a smuggled cellphone shows him in his small room handcuffed to a bed with propaganda blaring from speakers outside."

[_theglobeandmail.com](https://www.theglobeandmail.com)

www.thegreatescapelocations.com



[...] Even though McQueen's character, USAAF Captain Virgil Hilts (the "Cooler King"), tries to jump the barbed-wire border fence between Germany and Switzerland, it was actually filmed in the hills around Pfaffen, about 100km from the Swiss border. The jump took place in the Benken area in a field, alongside a small road between Rossmoos and Benken, with the Alps in the background.

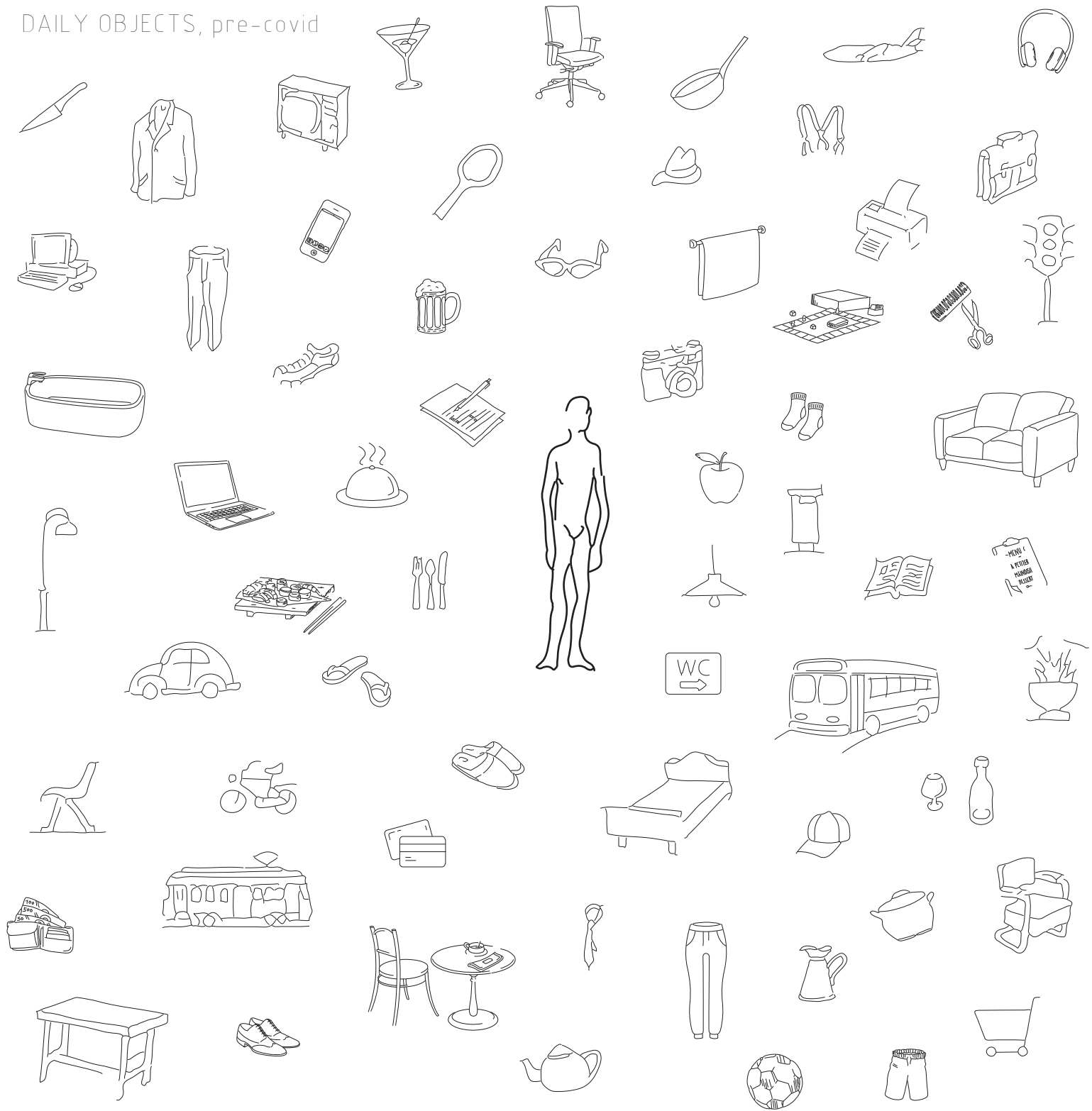
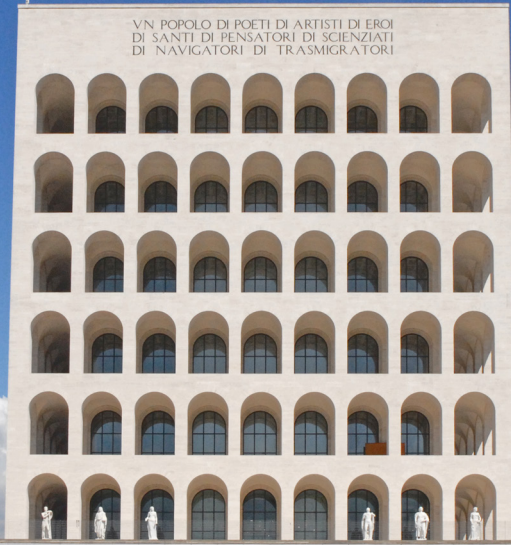
<https://motorbikewriter.com/homage-steve-mcqueens-great-escape-site/>

Soundtrack:
Harold Arlen, E.Y. Harburg - Over the Rainbow (1939)

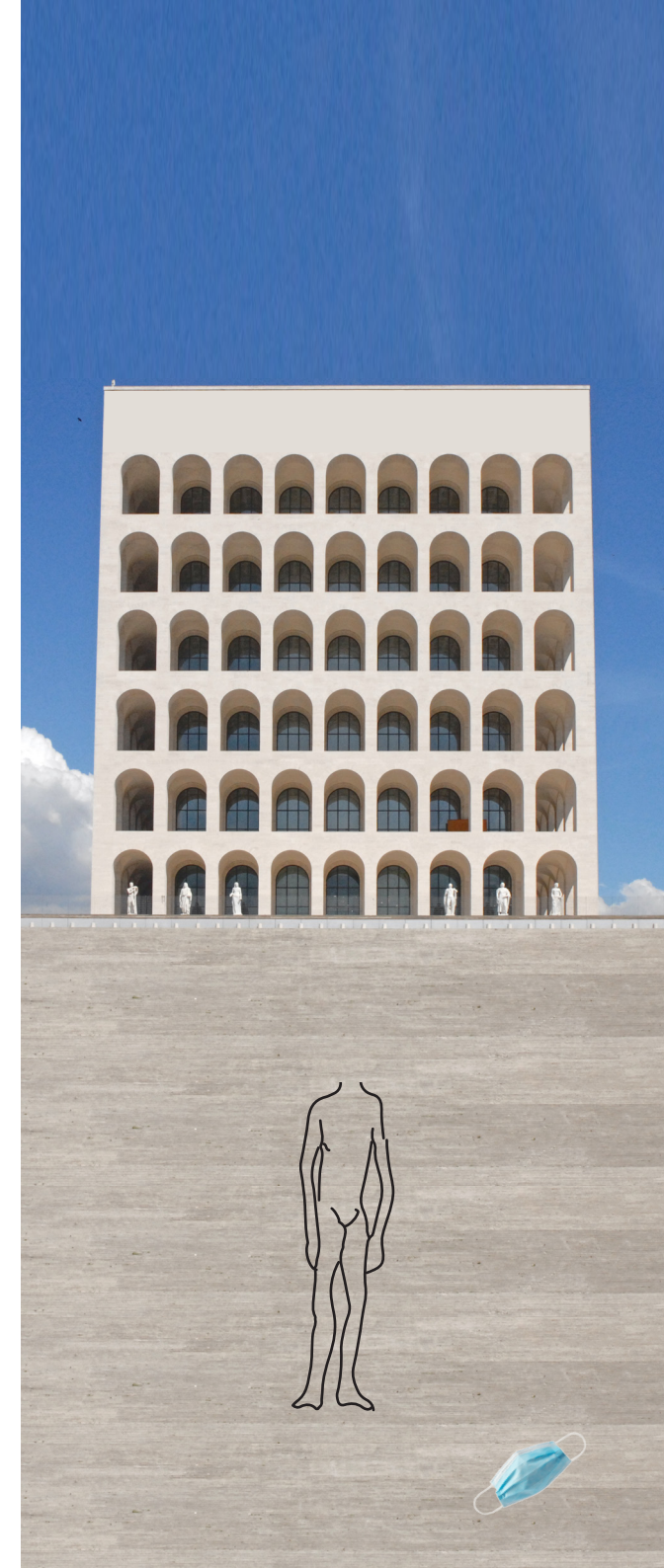
FO.LIES BY
Gino



DAILY OBJECTS, pre-covid



DAILY OBJECTS, covid-19 quarantine



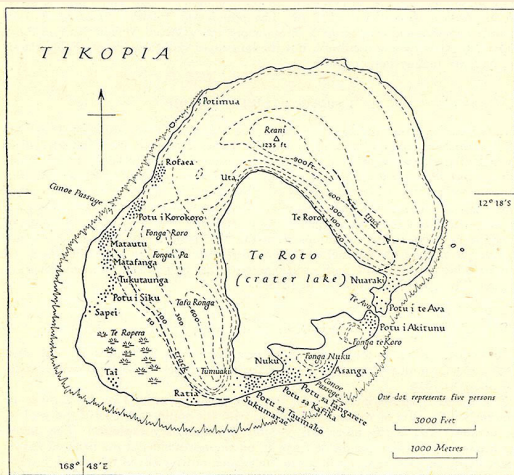
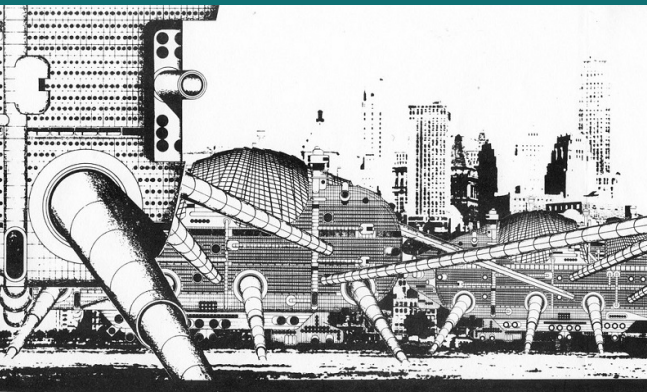


Fig. 227. Tikopia

Scale, orientation, coastline and form lines are only approximate. The reef continues as a very narrow fringe round the northern coast. Two main tracks only are shown; there are also less important tracks through cultivations; and the beach is also used as a highway. Based on: (1) R. Firth, *We, The Tikopia*, pp. xviii, xix (London, 1936); (2) R. Firth, *Primitive Polynesian Economy*, p. 40 (London, 1939).

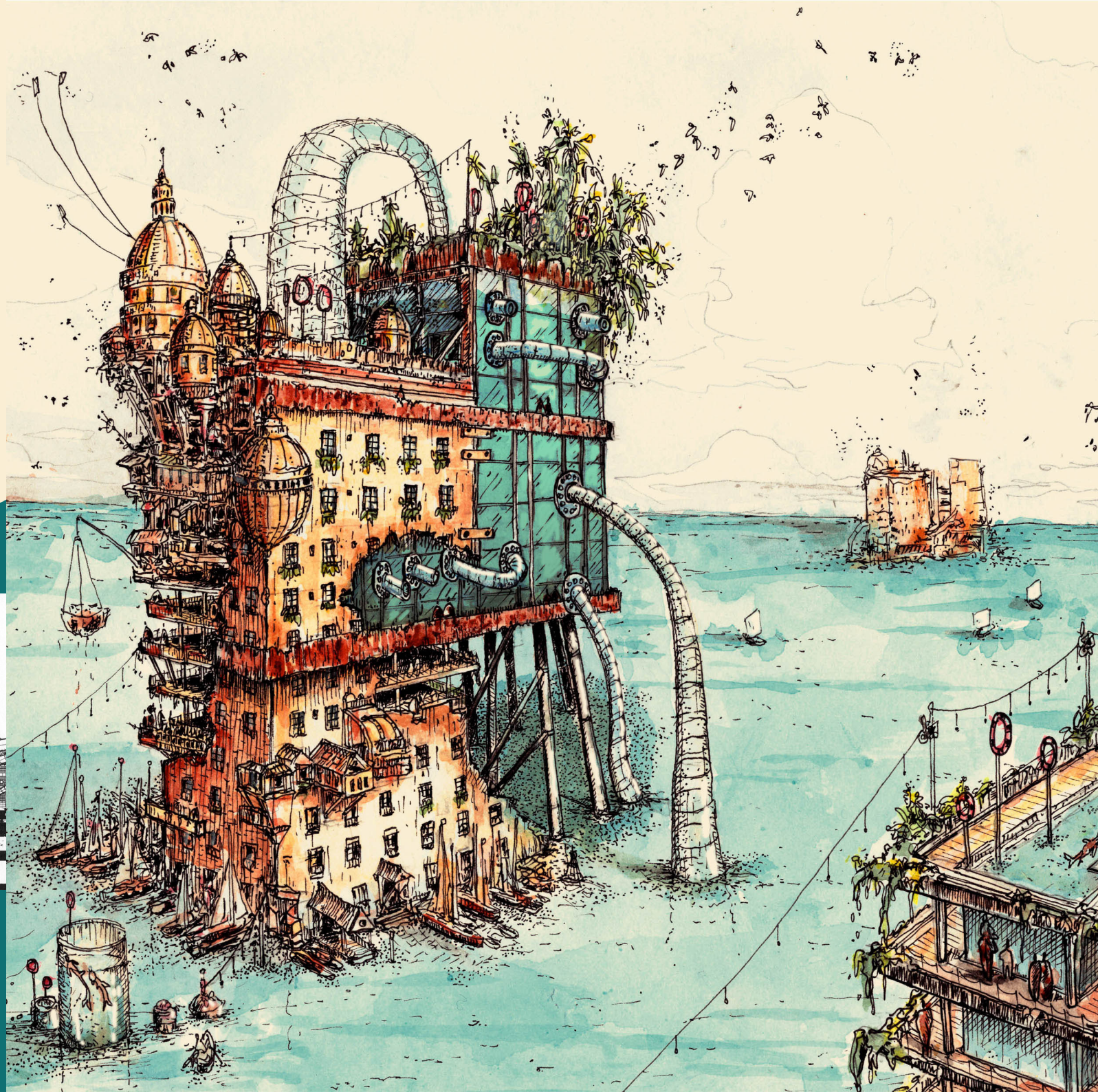
Historical map of Tikopia Island, Solomon Islands



A WALKING CITY



FO.LIES BY
Elie & Thibaud





SO LONG AND
THANKS FOR THE FISH
SO SAD THAT IT
SHOULD COME TO
THIS
WE TRIED TO WARN
YOU ALL BUT OH
DEAR...

YOU MAY NOT SHARE
OUT INTELLECT
WHICH MIGHT EXPLAIN
YOUR DISRESPECT
FOR ALL THE NATURAL
WONDERS THAT
GROW AROUND
YOU

THE WORLD IS
ABOUT TO BE
DESTROYED
THERE'S NO POINT
GETTING ALL
ANNOYED
LIE BACK AND LET THE
DOLPHINS RUN INTO
YOU.

DESPITE THOSE NETS
OF TUNA FLEETS
YOU FIT WITH US.

το βε
δεστροφεδ
τηρεσ νο
ποιντ
γεττινγ
αλλ

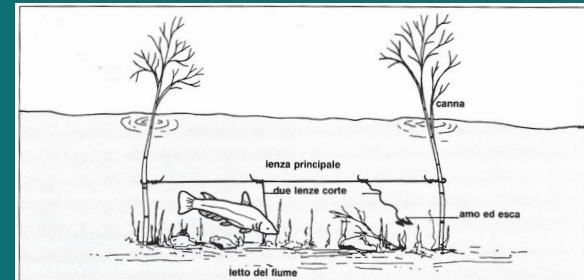
COME ONE AND ALL MAN AND MAMMAL

το βε
δεστροφεδ
τηρεσ νο
ποιντ
γεττινγ
αλλ



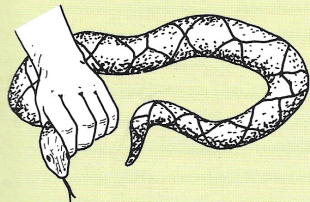
AN AMERICAN ART DECO WROUGHT-
IRON, MARBLE AND GLASS
SEAHORSE AQUARIUM, US\$ 11,400
by the Jewel Aquarium Company, 1920s
www.bonhams.com

Soundtrack:
The Bombay Royale - Sote Sote Adhi Raat
(2012)

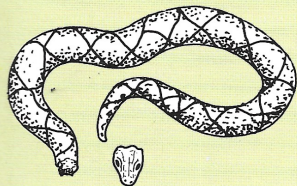


Potreste non voler correre il rischio di usare una lenza in una situazione di evasione, ma potete usare la lenza fissa sopra mostrata, nota come lenza sospesa. È un dispositivo di pesca da usare segretamente legando nell'oscurità una lenza tra due canne attaccandovi lenze e ami. Controllate la lenza ogni due ore fino all'alba.

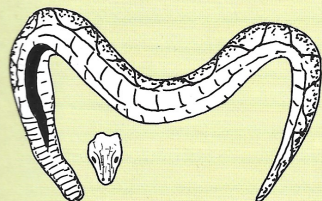
Come preparare un serpente prima di mangiarlo



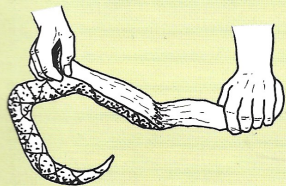
1 Tenete saldamente il serpente per la testa.



2 Con un coltello tagliate via la testa.



3 Apritegli la pancia e togliete le interiora. Utilizzatele come esca per trappole.



4 Scuoiate il serpente. Potete utilizzare la pelle per dei lacci o delle cinghie improvvisate o cose simili.

OSSOBUCO

Préparez les ingrédients pour la sauce, hachez finement les carottes, le céleri, les oignons. Mettez-les dans une casserole avec de l'huile d'olive extra vierge et une gousse d'ail (à retirer après la cuisson de la sauce). Mettre l'ossobuco légèrement fariné dans la poêle et déglacer avec un verre de vin blanc (attention à ce que tout s'évapore). Ajouter du bouillon à la viande petit à petit et cuire pour 1h30. 10 minutes avant la fin de la cuisson, ajouter les pois déjà cuits (et de la sauce de tomates si désiré).





Lausanne, project for a henhouse



Copyright freundsofsdarch

Santa Monica, hen-house.
Frank Gehry, 1989.



Las Vegas Hotel
Quarantine

" According to the Clark County coroner's office, about 1,100 visitors die while in Las Vegas each year. The coroner's office says 67 percent of those deaths are the result of accidents, 15 percent committed suicide and 11 percent were the victims of homicide. No cause of death could be determined in six percent of the deaths.

If a body is discovered by authorities in a hotel room, there's a mandatory two-week quarantine of that room. That's two weeks of potential revenue lost by the hotel. So, a few intrepid souls on the hotel staff move the body to a place on the resort grounds where a quarantine isn't required."

_vitalvegas.com



Bunker 599

Soundtrack:
Ry Cooder - Chicken Skin Music
(1976)

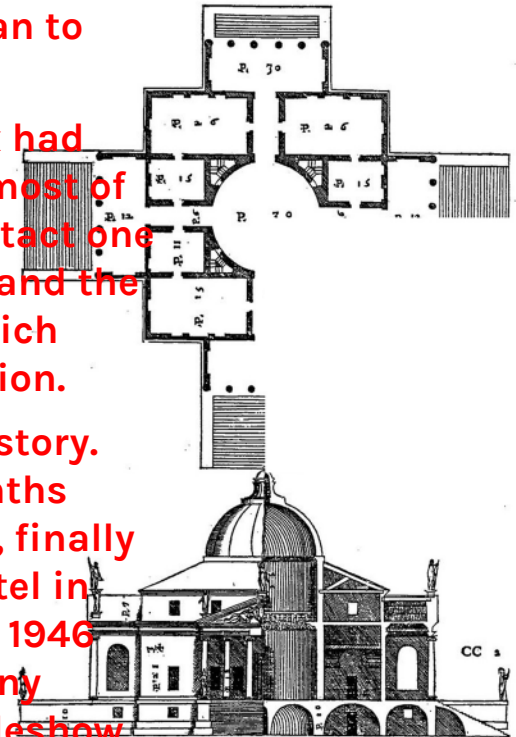
FO.LIES BY
Onde.Line

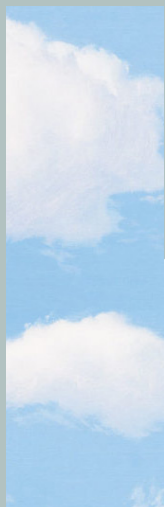
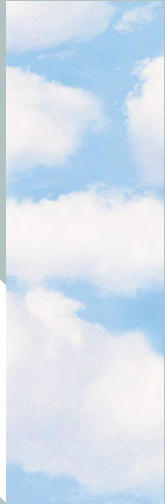
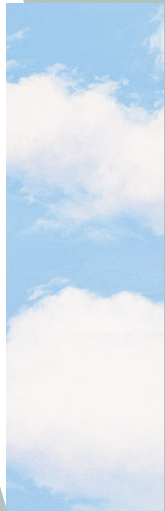
Mike lost his head in the usual rooster way. Mrs. L.A. Olson, wife of a farmer in Fruita, Colorado, decided to have chicken for dinner. Mrs. Olson took Mike to the chopping block and axed off his head. Thereupon Mike got up and soon began to strut around....

What Mrs. Olson's ax had done was to clip off most of the skull but leave intact one ear, the jugular vein and the base of the brain, which controls motor function.

The rest is poultry history. Mike lived for 18 months after losing his head, finally succumbing at a motel in the Arizona desert in 1946 during one of his many appearances as a sideshow attraction in the American southwest.

Would we be able to survive as long as Mike in a beheaded Rotunda?





We have multiple units ready to ship immediately!
 Call Us At (903) 804-3774 For More Information.

WE ARE UP AND RUNNING!
 We are building shelters and will not cease to do so! We are doing everything we can to get shelters out as quickly as possible!

WE WILL NOT CUT CORNERS!
 We will not cut corners to get shelters out faster. We now also sell an economical filter system designed to protect against coronavirus! call for info - (903) 804-3774




MOBILE ISOLATION UNITS



Whole Home Viral Air Filtration



GENERAL CONTRACTING MEDICAL SUPPLIES

Rising S Bunkers' fallout shelters, USA.
 "America's biggest manufacturer of ALL steel underground bunkers, storm shelters, safe rooms, blast doors, and bomb shelters."



These empty bunkers on the Great Plains have become the largest "prepper" community on the planet (Credit: Bradley Garrett). BBC 14/05/2020

Soundtrack:
 Darondo - Didn't I (1973)

FO.LIES BY Onde.Line

Devenus obligatoires dans les années '70, à la suite de la menace d'une troisième guerre mondiale, sont revenus au premier plan aujourd'hui après des années de débat sur leur utilité: les bunkers/abri-pci suisses, qui combattent depuis toujours contre un ennemi invisible.

Mais l'ennemi est invisible d'une autre façon. Marche avec nous au supermarché, nous attend sur les poignées de porte, descend avec nous des bus, rentre avec nous à la maison. Alors qui garantit qu'il ne nous suivra pas même dans les bunkers? Comment partager son espace avec des personnes inconnues et potentiellement infectées?

Si les gens ne vont pas au bunker, le bunker ira aux maisons des gens. Et ainsi nous équiperons nos habitations de portes blindées, de systèmes d'aération avec filtre, de trappes d'évacuation sous le lit, de bains à sec et de grands garde-manger pour les pâtes et la farine, en saluant nos voisins par un hublot et nos familles par un écran.

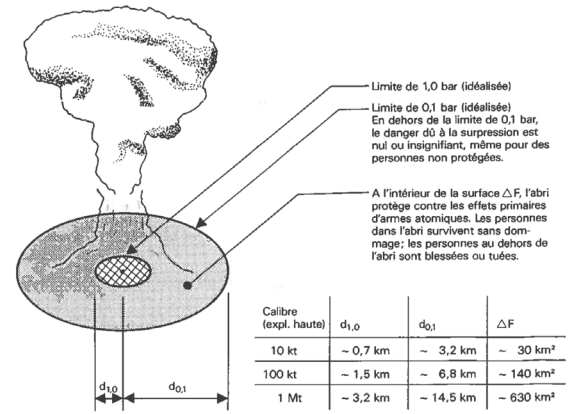
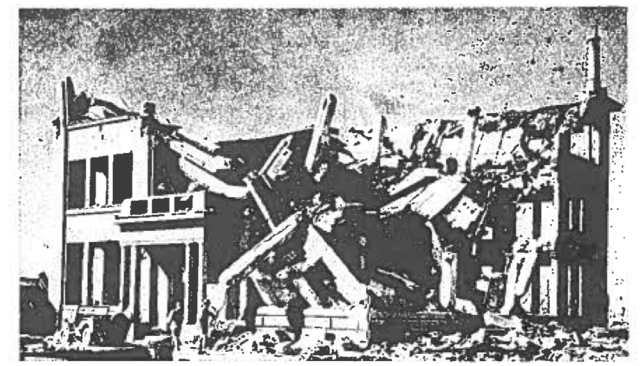


Figure 1.2-2 Surfaces idéalisées soumises à la surpression par l'explosion d'armes atomiques de 10 kt, 100 kt et 1 Mt à hauteurs d'explosion optimales.

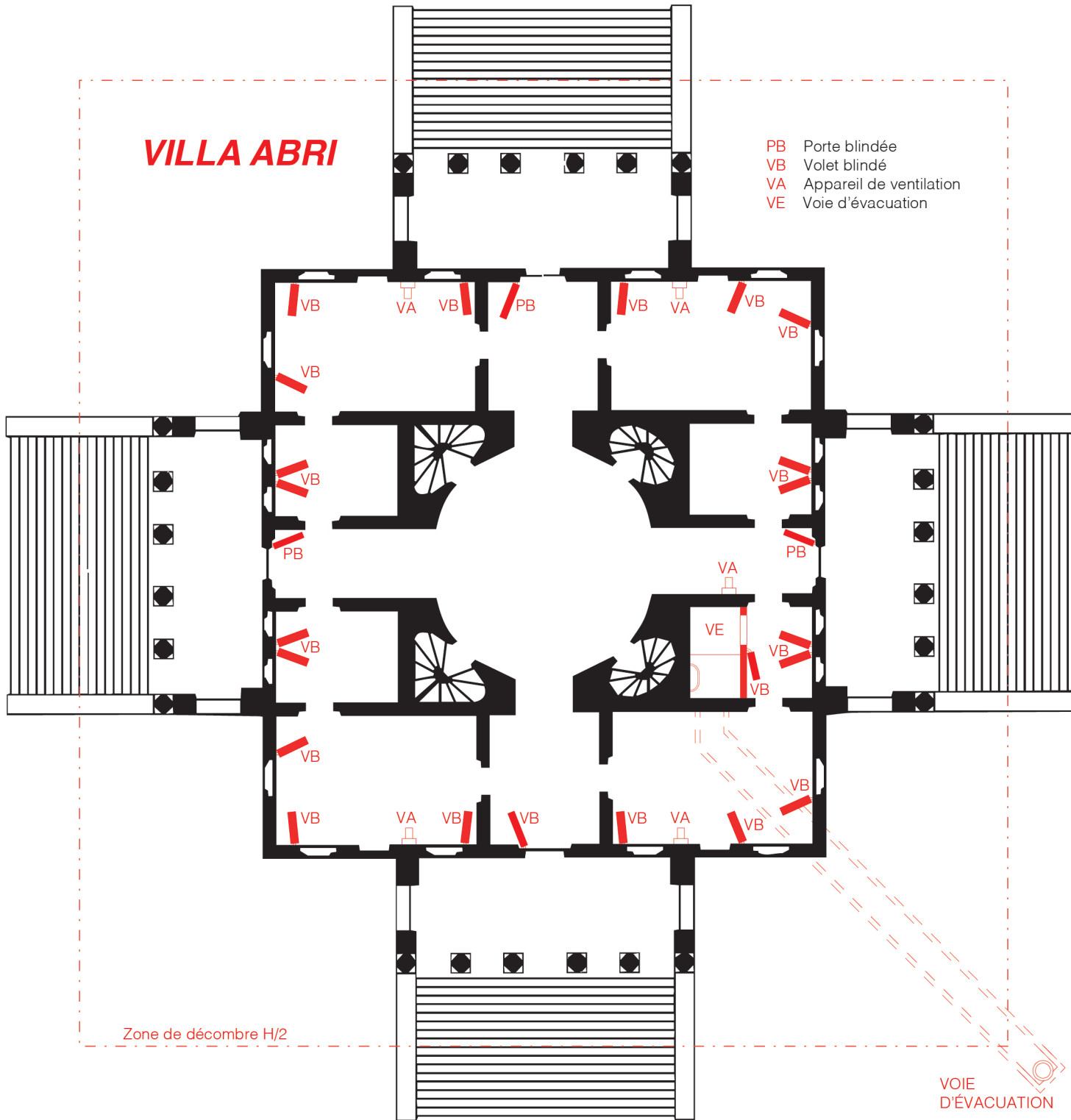


Hiroshima (quelques centaines de mètres du point zéro). Bâtiment de trois étages, en béton armé, avec de grandes fenêtres. Ici, les personnes auraient survécu dans un abri ITAP.

"Les ouvrages de protection sont projetés conformément aux Instructions techniques pour les constructions de protection des organismes et du service sanitaire (ITO 1977), aux Instructions techniques pour abris spéciaux (ITAS 1982) et aux Instructions techniques pour la construction d'abris obligatoires (ITAP 1984) édictées par l'Office fédéral de la protection de la population. Depuis 1994, les ouvrages de protection sont construits et dimensionnés uniformément selon les Instructions techniques pour la construction et le dimensionnement des ouvrages de protection (ITC 1994). L'entrée en vigueur de nouvelles normes SIA a rendu nécessaire la refonte et l'adaptation des ITC 1994 avant et des ITC 2017 après."

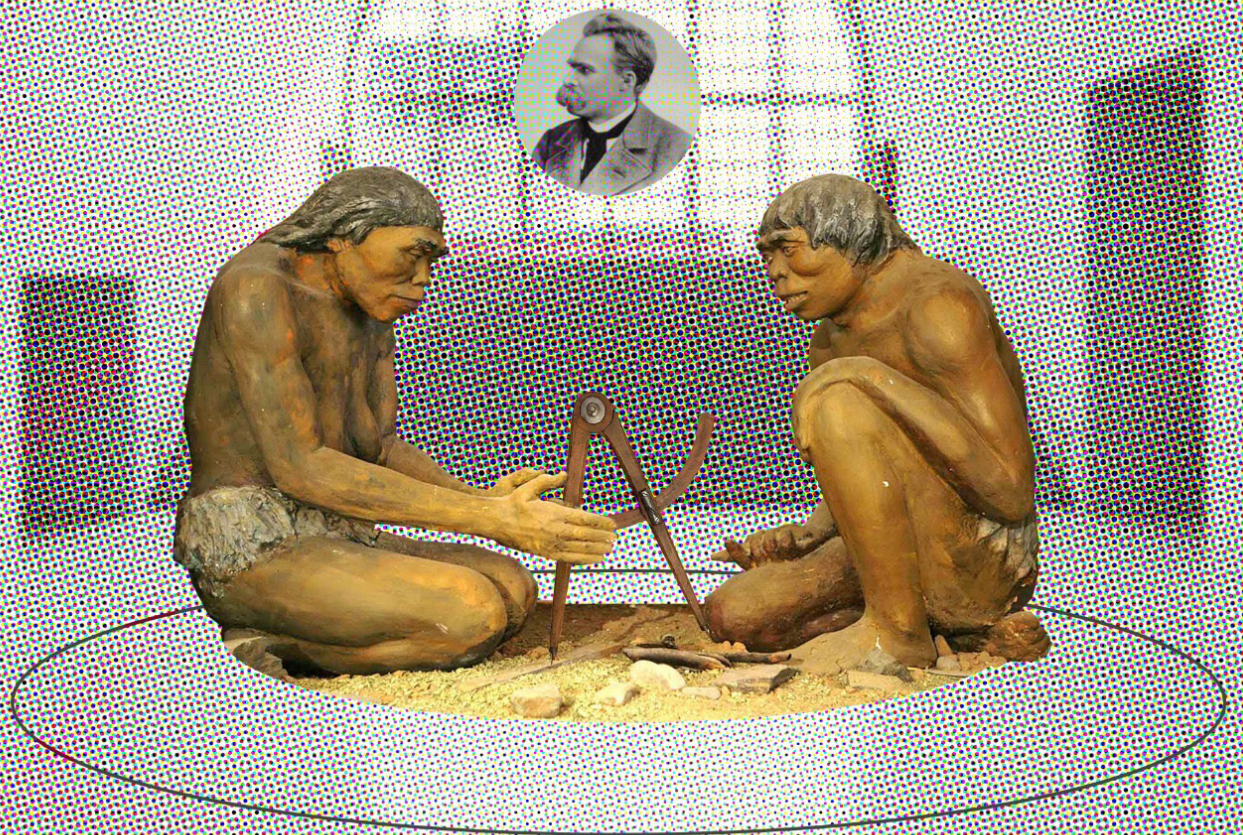
VILLA ABRI

- PB Porte blindée
- VB Volet blindé
- VA Appareil de ventilation
- VE Voie d'évacuation



Villa(s) Rotonda, Durrës







Street shop, Durrës, Albania.



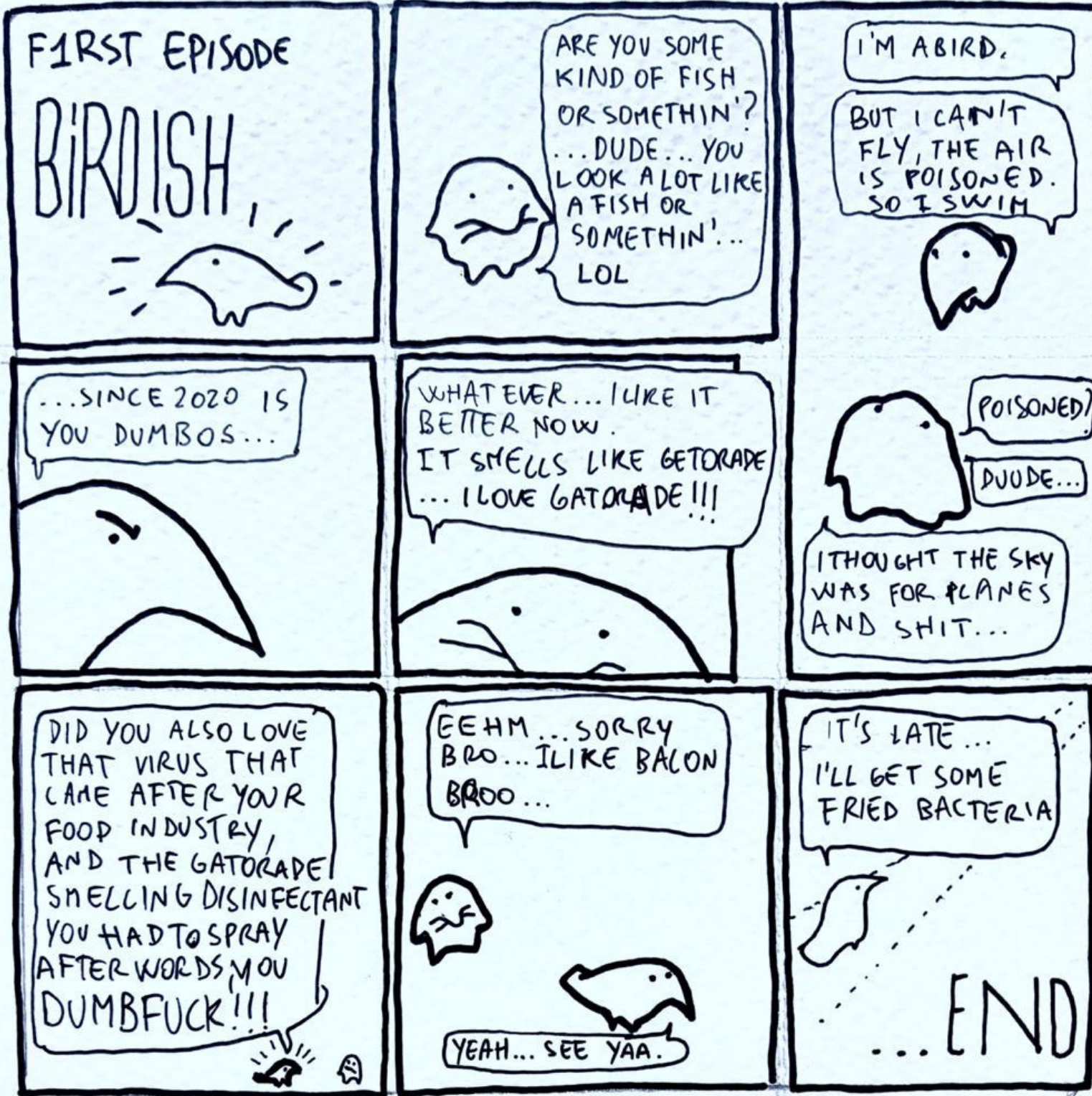
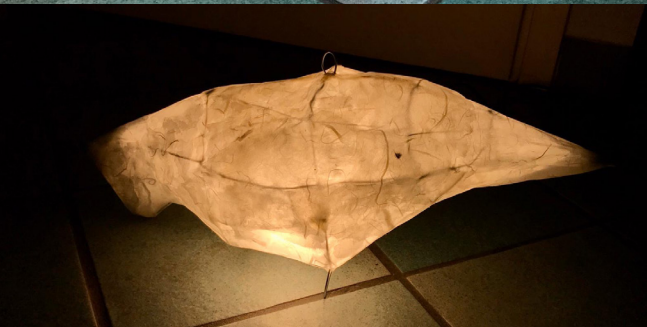
Ruins of Old Bylis, Albania



Soundtrack:
Alpha Blondy - Brigadier Sabari
(1982)



Soundtrack:
Idris Muhammad - Could Heaven
Ever Be Like This (1977)





period
place
typology

2017
Ruiru, KY
Sofa

COLLECTED

strategies

8-9

Over the rainbow

10-13

Daily objects pre-COVID19

14-17

Come one and all man and mammal

18-19

Ossobuco

20-21

Cock-a-doodle-doo,
Hen-house by Onde.Line

22-23

Onde.Line's hen-house escapee

24-25

Don't touch my balcony

26-29

Once upon a time in Switzerland

30-31

Monolike

32-33

Funky bazaar

34-35

Birdish 1°



period
place
typology

2019
Durrës, AL
Wall

Exchanges DEALERS

#07

1912, in Wichita County, Texas, a large petroleum reservoir was discovered. Investments and high-paying jobs are fueling an explosive economic growth in the city of Wichita Falls. Offices and logistical hubs were needed investors were eager to invest.

The construction firm of structural engineer J.D. McMahon announced in 1919 that he would build a high-rise annex to the Newby Building. McMahon collected \$200,000 in investment capital from a group of naïve investors, promising to construct a high-rise office building.

The key to McMahon's successful defense in the ensuing lawsuit was that legal documents listed the height as 480" as opposed to 480'. Investors didn't seem to notice, and McMahon never verbally stated that the actual height of the building would be 480 feet (150 m). The proposed skyscraper depicted in the blueprints that he distributed (and which were approved by the investors) was clearly labeled as consisting of four floors and 480 inches (12 m). Investors brought a lawsuit against McMahon over the size of the building, but to their dismay, the real estate and construction deal was declared legally binding by a local judge. The building today is listed on the Texas National Register of Historic Places.

"In the last 30 years, architecture has been deeply influenced by the conversion of things: Thatcher and Reagan, moving from a welfare state to a market economy. Architects used to be connected to good intentions, notionally at least. With the market economy, we've slowly found ourselves supporting, at best, individual ambitions and, at worst, pure profit motives. In that sense, every crisis perhaps presents an opportunity." Rem Koolhaas interviewed by Diana Budds, 21.05.16.

